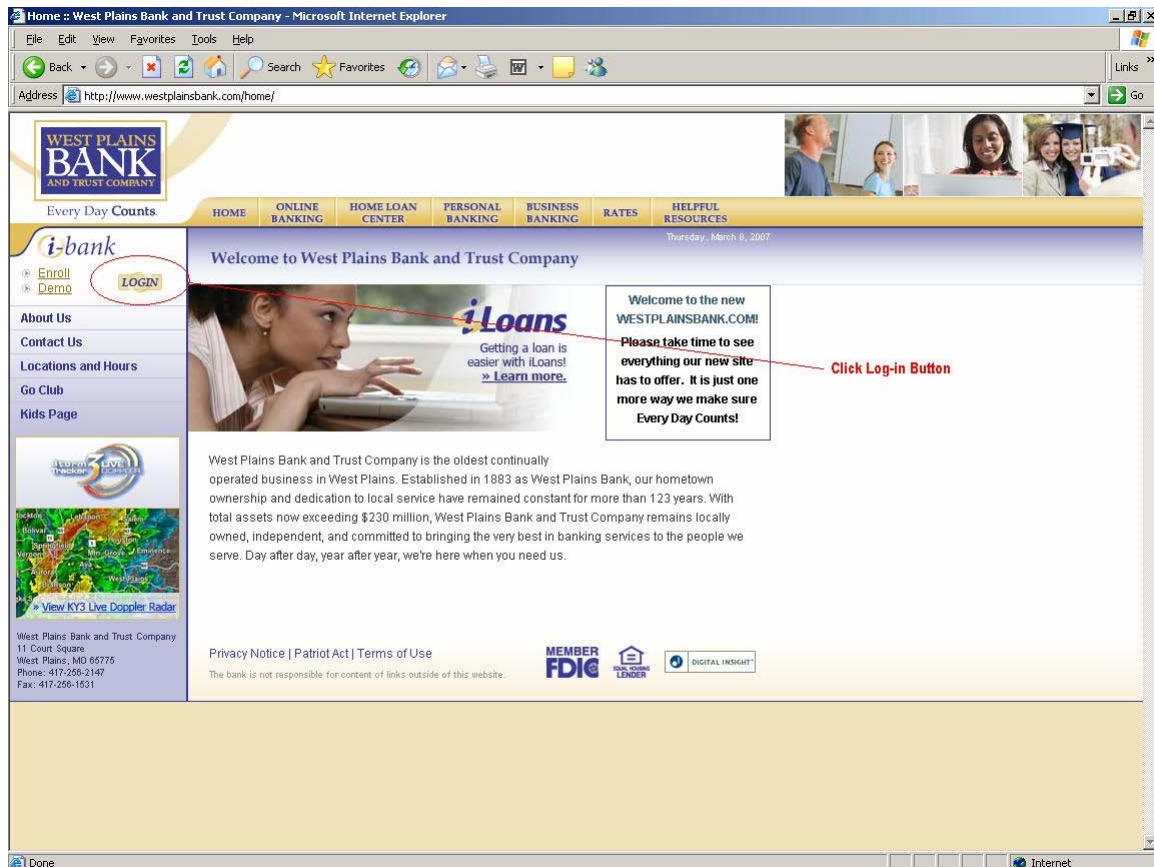


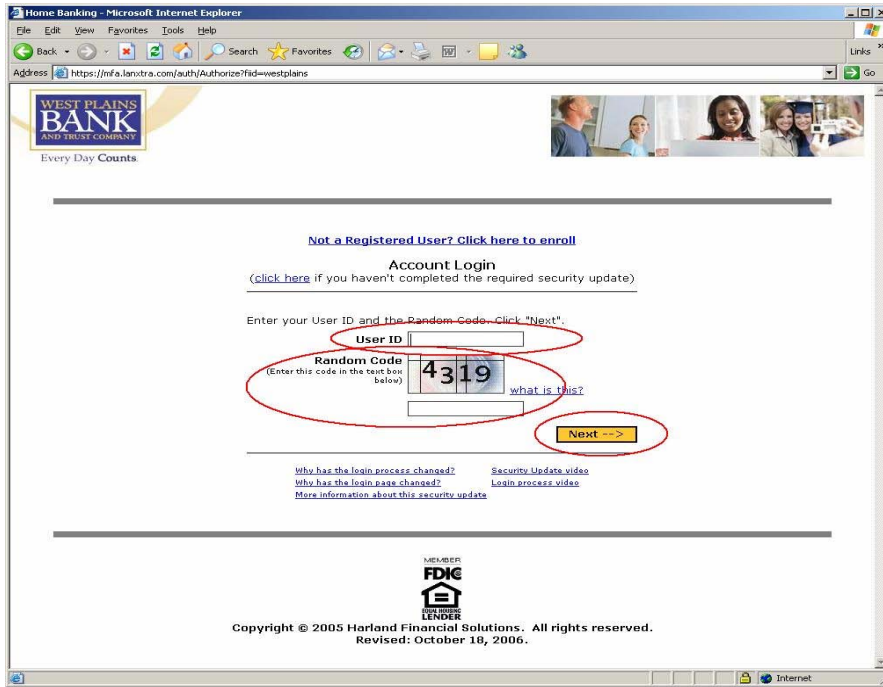


Log on with Multifactor Security Procedures

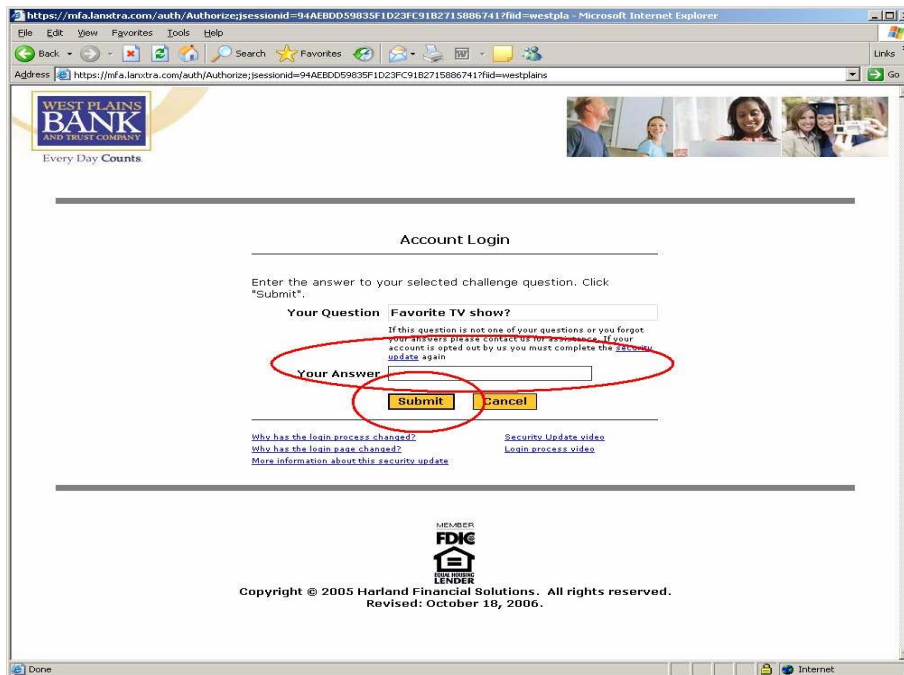


Open internet browser page, and go to West Plains Bank and Trust Company's home page at: www.westplainsbank.com.

Click "Login" button on the upper left hand side of the home page.

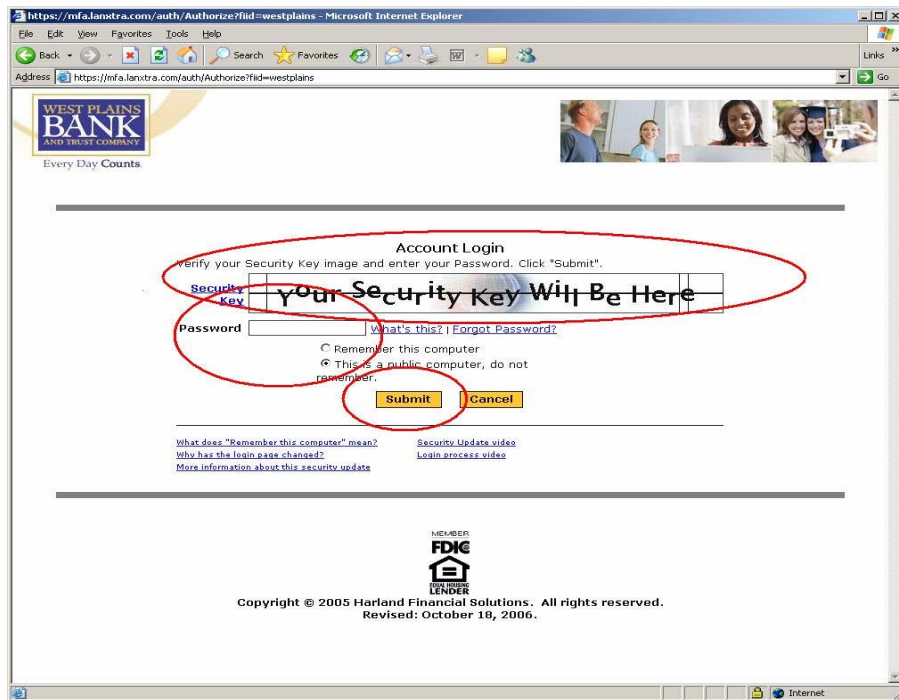


Enter your User ID (checking account number) into the User ID field.
Re-type the random code displayed in the box. Click Next to continue.



Enter the answer to your challenge question and click Submit to continue.

*Note – Challenge question answers are not case sensitive.



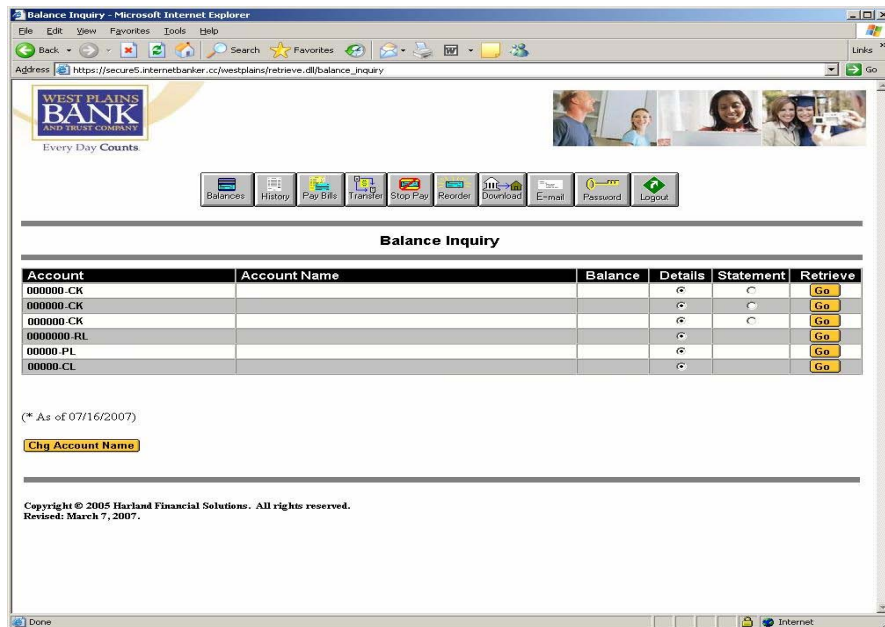
Verify that your security key is correct.

Enter your password in the field below your security key.

Leave the radio button on “This is a public computer, do not remember.”

Click Submit to continue.

*Note – Passwords must be entered exactly the way you entered it when you enrolled your account. All passwords must be at least 8 characters, and no more than 10 characters. They must contain uppercase and lowercase letters, and they must contain at least one number.



Your accounts will be displayed on this screen. Use the buttons above “Balance Inquiry” to navigate through the site. If at any point you need to reset your security questions, or if you have any further questions, please contact us at (417) 256-2147.