



## Multifactor Security Enrollment & Sign-on Procedures

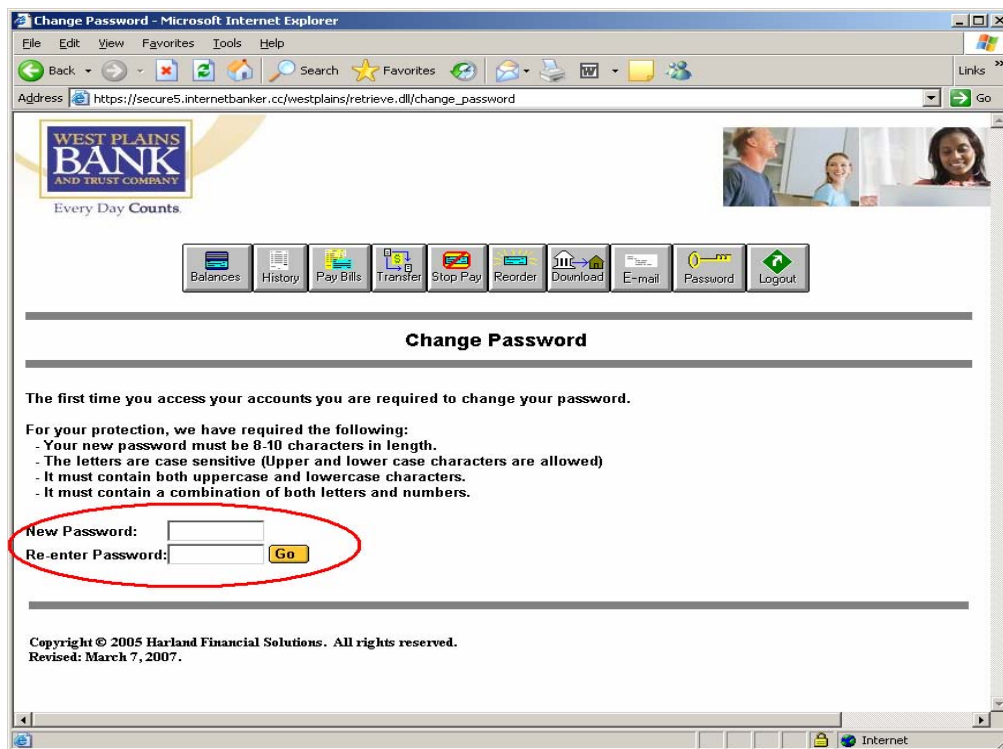
Open internet browser page, and go to West Plains Bank and Trust Company's home page at: [www.westplainsbank.com](http://www.westplainsbank.com).



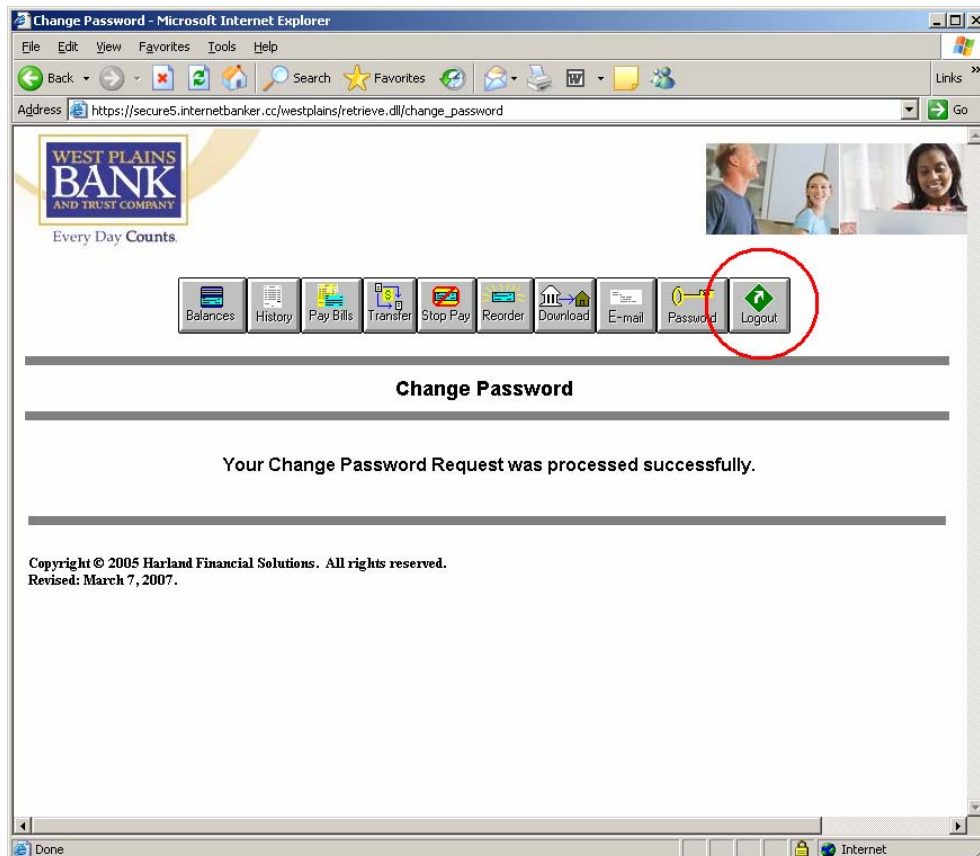
Click “Enroll” from the i-Bank section.

Fill in account and personal information in the screen above. For the “Select your own unique User ID” field, put your first and last name. This will not be the User ID that you will log in with.

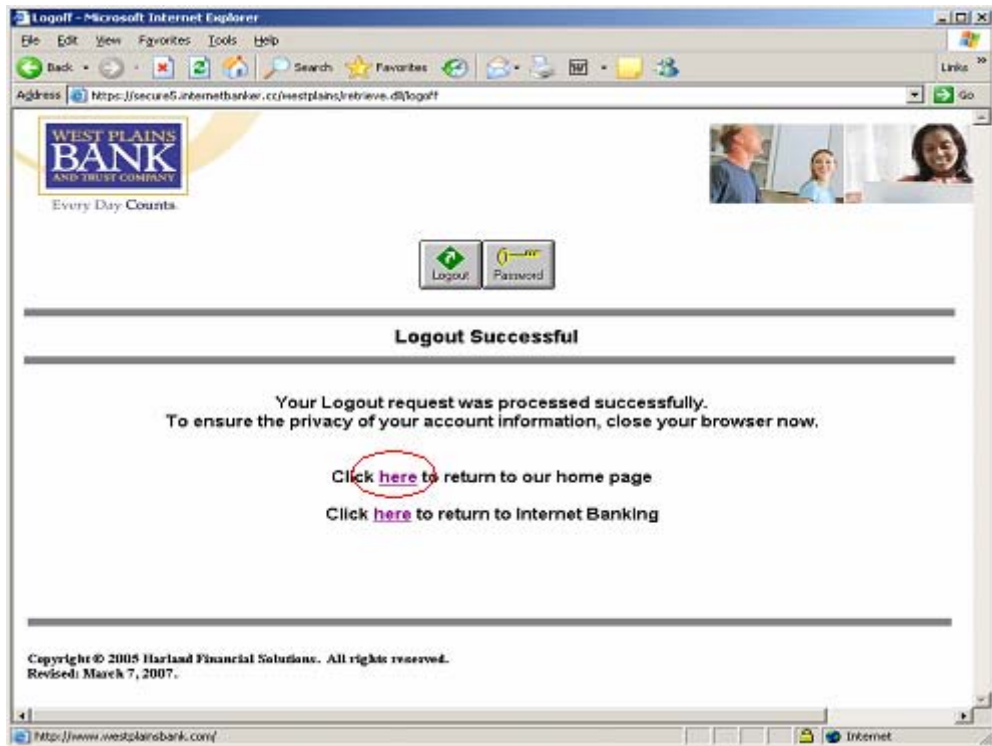
Click “I Agree.”



Type and confirm password following requirements listed above the password fields.



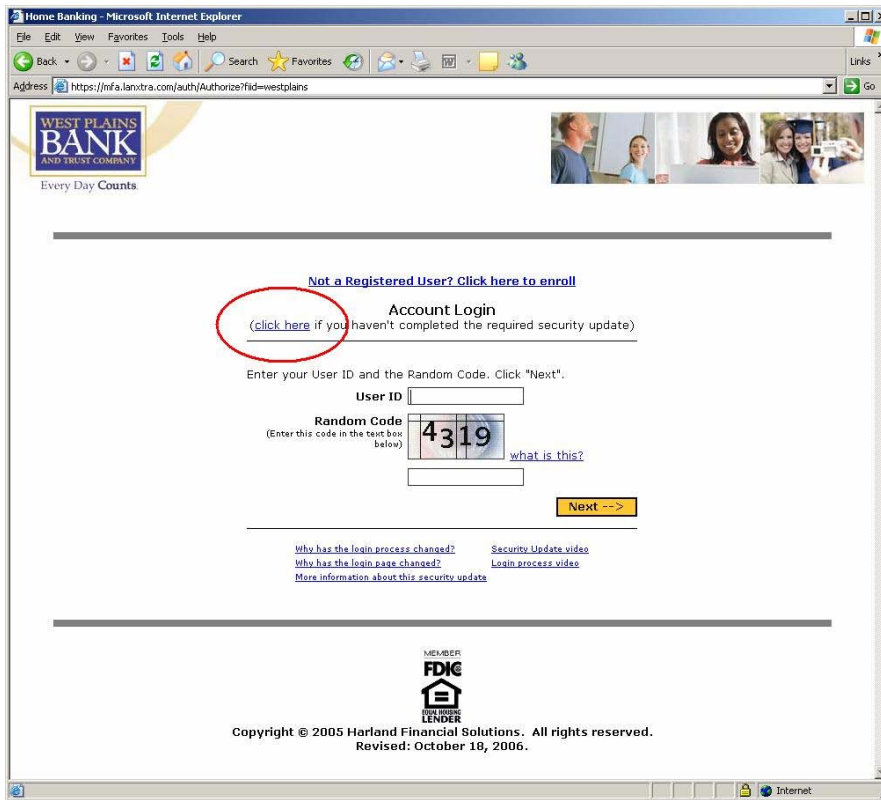
Password change is confirmed with the screen above. Click Logout.



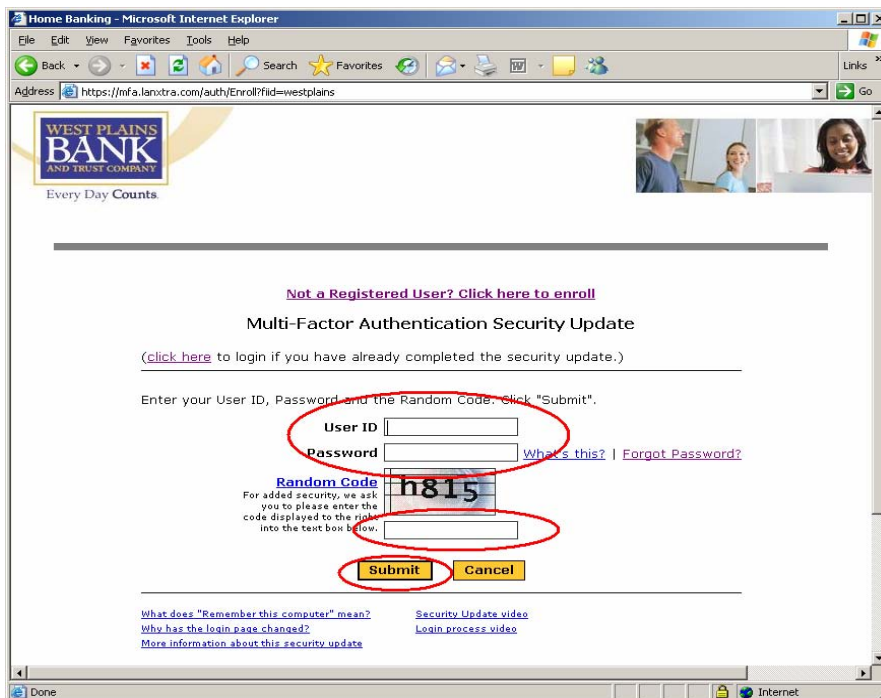
Click link to return to home page.



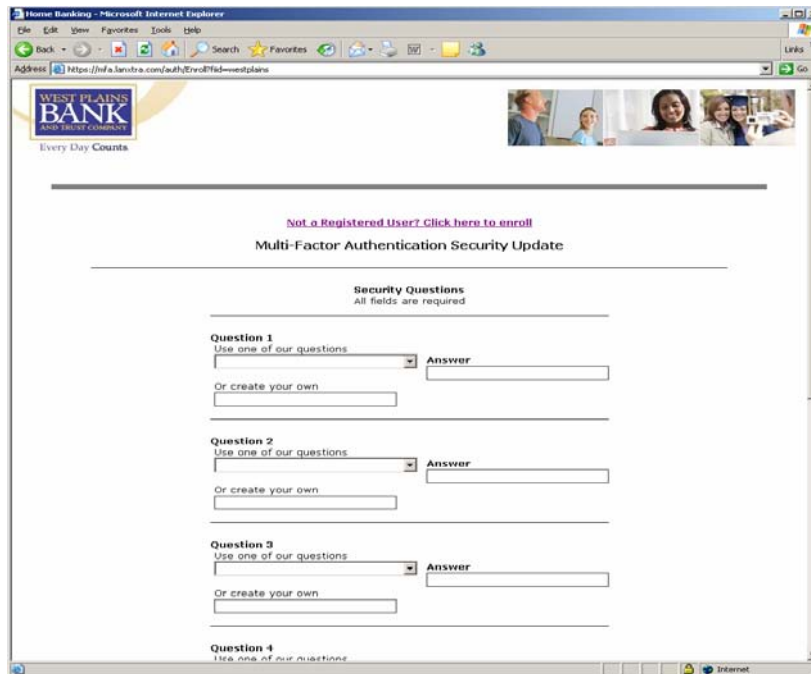
Click "Login" button on the upper left hand side of the home page.



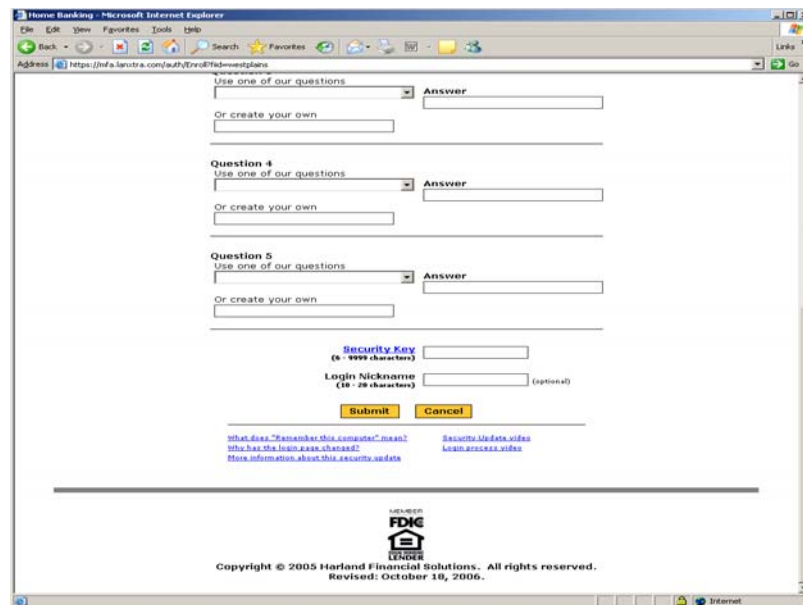
Click "Click Here" link above User ID field.



Enter User Id (Checking account number) and your password that you just entered, enter the four character random code that is displayed and click the submit button.

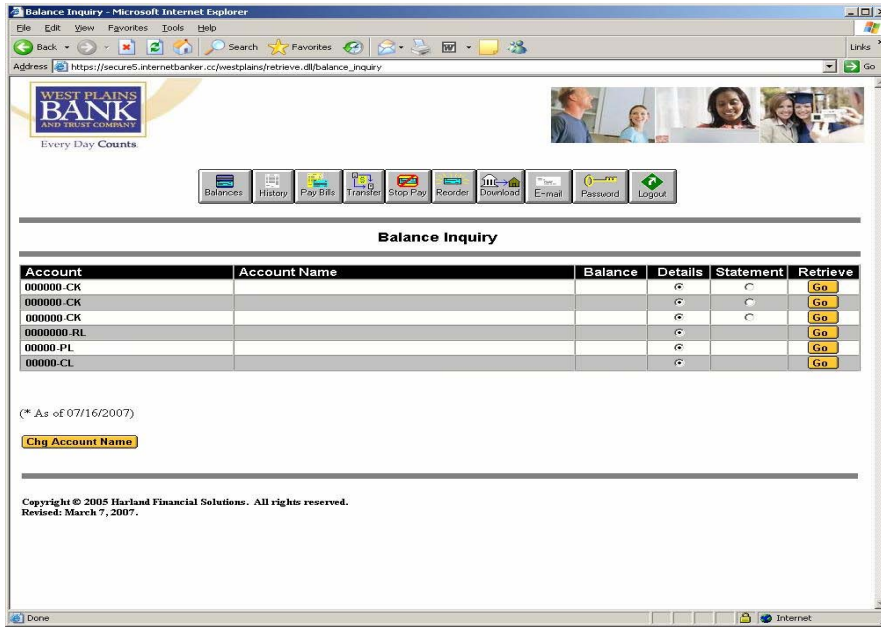


On this screen, there are five questions listed. There are eleven questions to choose from, you must answer five. If you do not like the questions listed, you can create your own questions on this screen.



After answering your five questions, there is a field labeled “Security Key.” Your security key can be anything you would like. It has to be a minimum of 6 characters, and can be letter and/or numbers, upper and/or lower case, and can include hyphens ( - ). Your security key will be displayed directly above where you type your password. YOU WILL NEVER HAVE TO RE-TYPE YOUR SECURITY KEY. It is displayed there to tell you that you are at our website and not a fraudulent site, posing as ours. Enter your security key and click the submit button below.

\*\*Note – We also recommend printing this page and keeping it in a secure location so you will have access to your challenge question answers. To do this, just select “Print” from the file drop down menu.

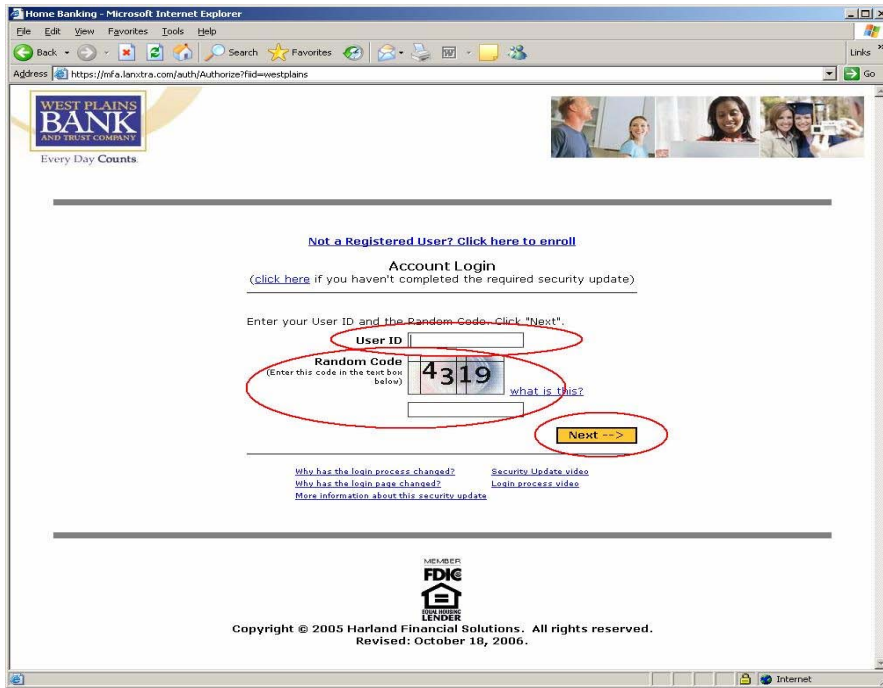


Your account list is now displayed and you are successfully enrolled.

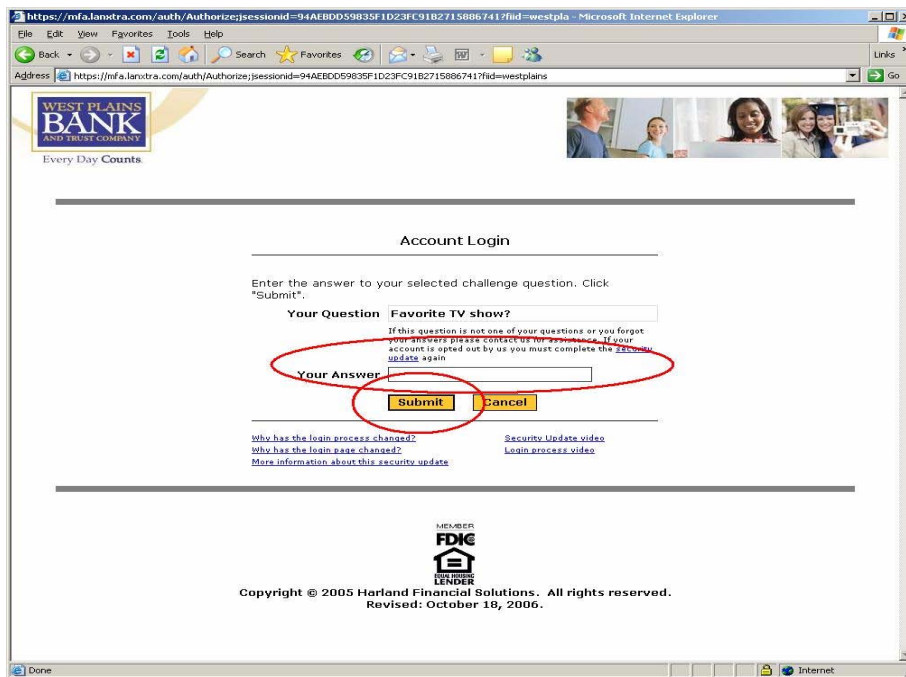
## LOGGING INTO I-Bank



Click Login from the home page at [www.westplainsbank.com](http://www.westplainsbank.com)

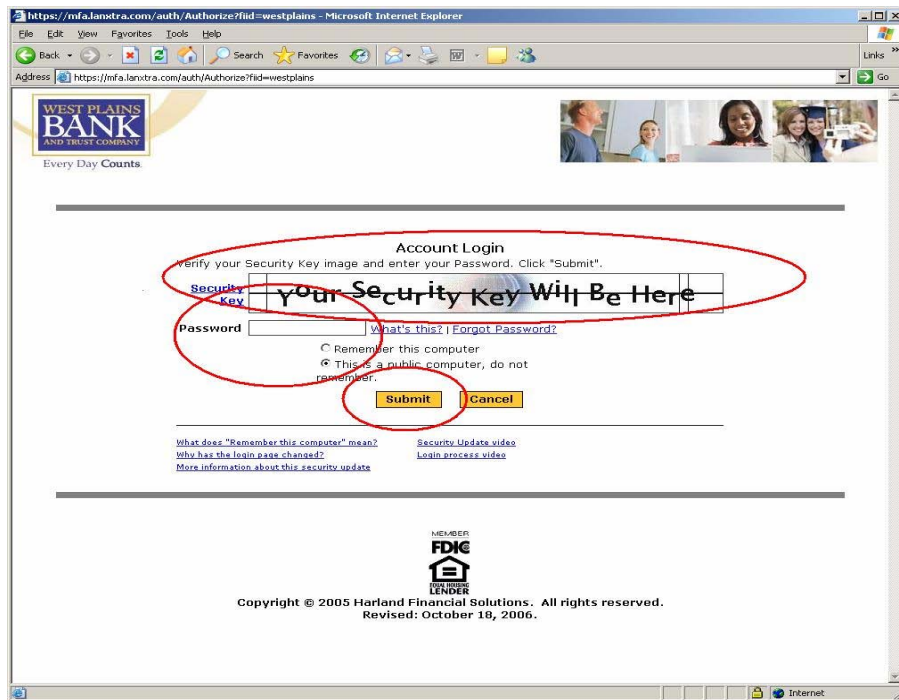


Enter your User ID (checking account number) into the User ID field.  
Re-type the random code displayed in the box. Click Next to continue.



Enter the answer to your challenge question and click Submit to continue.

\*\*Note – Challenge question answers are not case sensitive.



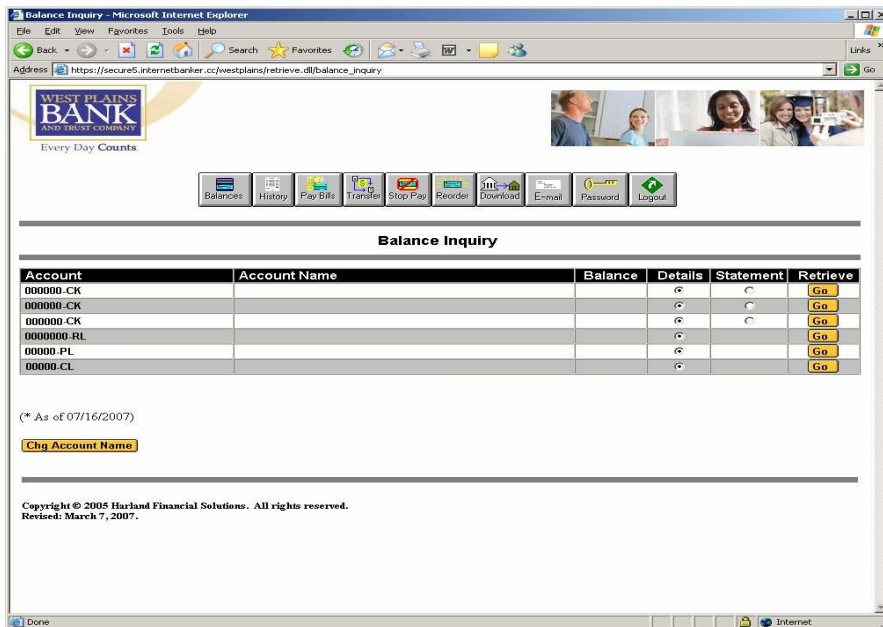
Verify that your security key is correct.

Enter your password in the field below your security key.

Leave the radio button on “This is a public computer, do not remember.”

Click Submit to continue.

\*\*Note – Passwords must be entered exactly the way you entered it when you enrolled your account. All passwords must be at least 8 characters, and no more than 10 characters. They must contain uppercase and lowercase letters and they must contain at least one number.



Your accounts will be displayed on this screen. Use the buttons above “Balance Inquiry” to navigate through the site. If at any point you need to reset your security questions, or if you have any further questions, please contact us at (417) 256-2147.